

## SPECTRAL AND THEORETICAL STUDIES OF THE STABILITY CONSTANT OF CHARGE TRANSFER COMPLEXES OF A NUMBER OF SCHIFF BASES WITH $\text{Eu}(\text{FOD})_3$ IN DIFFERENT SOLVENTS

Layla Mohammad Najeeb Saleem, Emad Abdulilah Saleh Al-Hyali And Feda Hasan Marie Al-Taei  
Chemistry Department, College of Education, University of Mosul.

(Accepted for publication: June 9, 2013)

### Abstract

The equilibrium constants (K) of charge transfer complexes (CTC) of salicylidene amino pyridines and salicylidene aniline with lanthanide shift reagent  $\text{Eu}(\text{fod})_3$  in different solvents were determined by applying Benesi-Hildebrand equation. The effect of the polarity of the solvent, electronic factors and steric effect were investigated.

Structural and energetic parameters like bond lengths, bond angles, energies of HOMO and LUMO orbitals,  $\eta$ ,  $\mu$ , and  $\omega$  were obtained by quantum mechanical calculations employing semi empirical model (Austin Method1, AM1). The theoretical parameters are used to illustrate the ambiguities and support the explanation of the experimental results.

### Introduction

Lanthanide shift reagent applications are long known to be confined for NMR studies (Binnemans *et al.*, 2003 and Sievers, 1980). Later they have been used to study the UV spectra of Schiff bases. Thus addition of  $\text{Eu}(\text{fod})_3$  to benzylidene anilines (Sulaiman *et al.*, 1998) in n-heptanes and acetonitrile resulted in the appearance of two absorption bands in the UV spectra.

In other study  $\text{Eu}(\text{fod})_3$  used with salicylidene anilines and their substituents, and the aliphatic amines in cyclohexane forming new complexes which were studied by UV spectroscopy. Also  $\text{Pr}(\text{fod})_3$  was used with benzylidene anilines in cyclohexane (Al-Dabbagh, 2005 and Saleem *et al.*, 2006) and in other solvents where K values were calculated, the thermodynamic parameters for these complexes were also estimated. Salicylidene aniline was studied with  $\text{Pr}(\text{fod})_3$  in mixed solvents (Ali, 2006), it was noticed that, addition of polar solvent to non polar solvent resulted in disappearance of the CTC band. Schiff bases derived from 2-amino pyridine and 2-amino pyrazine were prepared and identified spectroscopically, it was found that, these Schiff bases are present in two tautomers the keto and enol forms, and the enol form is preferred in non polar solvents (Asir *et al.*, 2007).

In other study new complexes were synthesized from the reaction of Cr(III) with Schiff bases which result from the condensation of 2-amino pyridine with vaniline and salicylaldehyde, the complexes were identified spectroscopically and found to be tetrahedral (Dubey, 2008).

The aim of the present study is to shed light on the effect of the lanthanide shift reagent  $\text{Eu}(\text{fod})_3$  on Schiff bases containing amino pyridines and salicylaldehyde in different solvents and have an idea theoretically about the most probable positions for coordination and compare them with salicylidene aniline.

### Experimental

#### Chemical materials:

Salicylaldehyde, 2-amino pyridine, 2-amino methyl pyridine, 2-amino-4-methyl pyridine, aniline, 2-amino phenol, and lanthanide shift reagent  $\text{Eu}(\text{fod})_3$  all the above chemicals are purchased from Fluka and they are with high purity except salicylaldehyde which has been distilled at its boiling point.

**The solvents used:** are cyclohexane,  $\text{CCl}_4$ , chlorobenzene, dichloro methane and acetonitrile. All of these solvents were distilled at their boiling points.

#### Synthesis of Schiff bases:

Schiff bases were prepared according to the procedure of El-Bayomi and his coworker (El-Bayomi, 1971) by mixing equimolar amounts of salicylaldehyde with primary amines after dissolving it in absolute ethanol then addition of the solution of amine to the aldehyde gradually with stirring, then refluxing the mixture for (2-6 hrs). The mixture was left to cool; the precipitate was filtered, washed with cold ethanol or methanol, then re-crystallized several times to yield a pure product. IR of the compounds were measured.

### Preparation of solution and formation of the complex:

2ml of the suitable solvent was placed in the UV cell (the sample and the blank), then 100  $\mu\text{l}$  of  $10^{-2}$  M  $\text{Eu}(\text{fod})_3$  was added to each cell, after that successive additions (20-70  $\mu\text{l}$ ) of the donor (Schiff base) was added to the sample cell, an equivalent amount of the solvent was added to the blank cell to maintain equivalent volumes in both cells. UV measurements were carried out using Shimadzu UV-visible spectrophotometer (UV-1659 pc).

### Stoichiometry of the complexes:

The continuous variation method was applied for the determination of stoichiometry.

### Determination of K value for the complex:

The K values are determined by applying Bensi Hildebrand (Bensi *et al.*, 1949) equation which can be represented as follow:

$$\frac{[A_0]}{\text{Abs}} = \frac{1}{\epsilon_{AD}} + \frac{1}{K \cdot \epsilon_{AD}} \cdot \frac{1}{[D_0]} \dots \dots (1)$$

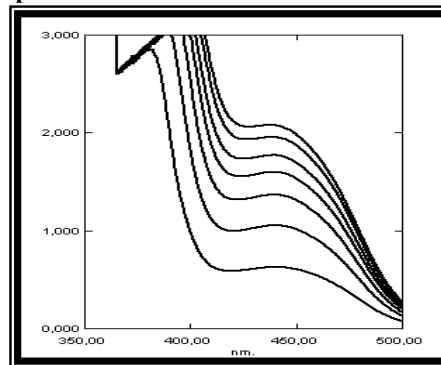
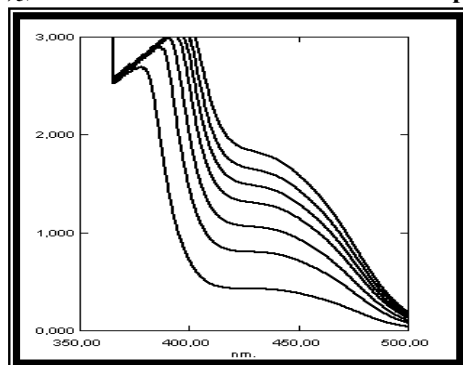
Where  $[A_0]$  is the initial concentration of the acceptor ( $\text{Eu}(\text{fod})_3$ ),  $[D_0]$  is the initial

**Table(1)** : The values of  $\lambda_{\text{max}}$  for the Schiff bases,  $\text{Eu}(\text{fod})_3$  and the complexes formed from them in different solvents

Solvent	S2AP		S2A3MP		S2A4MP		SA		BOOHA		$\lambda_{\text{max}}^r$
	$\lambda_{\text{max}}^b$	$\lambda_{\text{max}}^{\text{co}}$	$\lambda_{\text{max}}^b$	$\lambda_{\text{max}}^{\text{co}}$	$\lambda_{\text{max}}^b$	$\lambda_{\text{max}}^{\text{co}}$	$\lambda_{\text{max}}^b$	$\lambda_{\text{max}}^{\text{co}}$	$\lambda_{\text{max}}^b$	$\lambda_{\text{max}}^{\text{co}}$	
Cyclo-hexane	354	440	356		353	441			355	445	292
$\text{CCl}_4$	354	444									293
Chloro-benzene	353	441	356	443	352	440	342	437			294
Methylene Chloride	348	436	353	441	348	437	339	430			284
Aceto-nitrile	345	450									292

S2AP= Salicylidene-2-amino pyridine, S2A3MP= Salicylidene-2-amino-3-methyl pyridine, S2A4MP= Salicylidene-2-amino-4-methyl pyridine, SA= Salicylidene aniline, and BOOHA = Benzylidene -o-hydroxy aniline.

$-\lambda_{\text{max}}^b = \lambda_{\text{max}}$  at maximum absorption of Schiff bases,  $-\lambda_{\text{max}}^r = \lambda_{\text{max}}$  at maximum absorption of  $\text{Eu}(\text{fod})_3$ ,  $-\lambda_{\text{max}}^{\text{co}} = \lambda_{\text{max}}$  at maximum absorption of complex.



concentration of the donor molecule (Schiff base) and  $\epsilon_{AD}$  is the extinction coefficient of the complex. Abs is the absorbance of the complex.

### Theoretical part:

The well known Chem. Office (v.11, 2008) program was used for performing this study. Two quantum mechanical methods were used to establish the required values of angles, bond lengths, electronic charges and the steric interactions. One of these methods is a semi empirical and represented by the AM1 model and the second one is an abinitio calculation presented as HF (6-311G (d,p)) method.

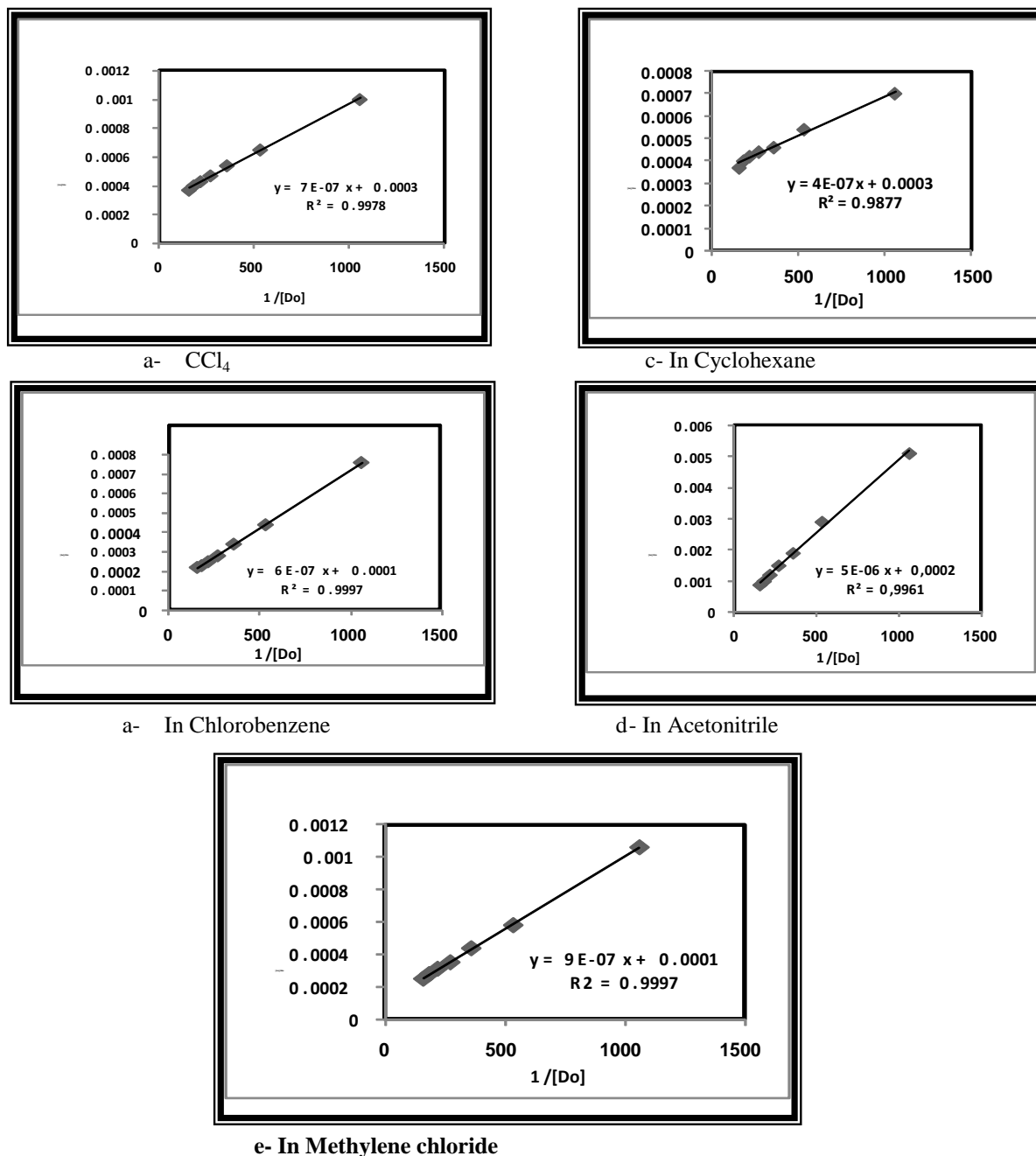
### Results and Discussion

The UV spectra of the Schiff bases studied in this work showed different absorption maxima before and after addition of  $\text{Eu}(\text{fod})_3$ , given in Table (1). From this table, it can be seen that, addition of  $\text{Eu}(\text{fod})_3$  in different solvents resulted in the appearance of a new band (Figure (1)), which could be attributed to the formation of CT complex.

(a) In Methylene chloride (b) in Chlorobenzene  
**Figure (1): UV spectra of CT complexes of S2AP with Eu(fod)<sub>3</sub> in two solvents**

The stoichiometry of this complex was found to be 1:1. Plots were performed between  $[A_o]/[Abs]$  versus  $1/[D_o]$  according to Bensi Hildebrand equation (eq.1).

Straight lines (Figure (2)) were obtained, where the K values were determined from the slopes and intercepts of the plots.



**Figure (2):** Linear relationships obtained from the application of B-H equation on S2AP in various solvents

The values of K for salicylidene 2-amino pyridine in different solvents are given in Table (2). Similarly plots were performed for S2A3MP and SA and BOOHA in two solvents (Chlorobenzene and methylene chloride). The

obtained K values for these compounds are tabulated in Table (3).

**Table (2):** The values of K for the complexes of S2AP with Eu(fod)<sub>3</sub> in different solvents.

Compound	Solvent	K mol <sup>-1</sup>
S2A3MP	Chlorobenzene	50
	Methylene chloride	20
S2A4MP	Cyclohexane	13
	Chlorobenzene	250
	Methylene chloride	142
SA	Methylene chloride	100
	Chlorobenzene	67
<i>BOOHA</i>	Chlorobenzene	7

From the above results, it can be seen that, many factors play role in determining the values of K in the studied system. If we look at the values of K for S2AP with Eu(fod)<sub>3</sub> in solvents with different polarities, it can be observed that, these values are high in non polar solvent (Table (1)), This could be attributed to the interaction between these polar solvents with the Schiff base because of the presence of the nitrogen atoms in the imine group and/or the pyridine ring in addition to the hydroxyl group which make it difficult for Eu(fod)<sub>3</sub> to interact with the Schiff base in the presence of these polar solvents, i.e., the solvation (which is a sort of interaction) causes shielding of the Schiff base and preclude its interaction with the shift reagent, thus lowering the value of K.

Additional observation can be drawn out if we compare K values of the following Schiff bases: S2AP, S2A3MP, and S2A4MP when interacting with the Eu(fod)<sub>3</sub>; it can be seen that, these values changes according to the following order:

Solvent	S2A3MP	S2AP	S2A4MP
Chlorobenzene	50	200	250
CH <sub>2</sub> Cl <sub>2</sub>	20	111	142

This variation can be explained in terms of the electronic effect on the nitrogen of the imine group, thus the presence of a methyl group in the

**Table (3):** The values of K for the complexes of Schiff bases with Eu(fod)<sub>3</sub> in different solvents

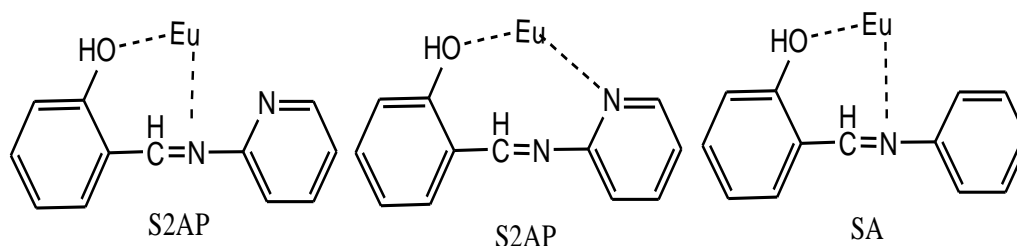
Solvent	K mol <sup>-1</sup>
Cyclohexane	750
CCl <sub>4</sub>	428
Chlorobenzene	200
Methylene chloride	111
<i>Acetonitril</i>	40

para position with respect to the imine group in S2A4MP increases the electron density on the nitrogen atom compared to that of the compound with the methyl group in the meta position which makes the first compound more able to interact with the Eu(fod)<sub>3</sub> and therefore increases its K value.

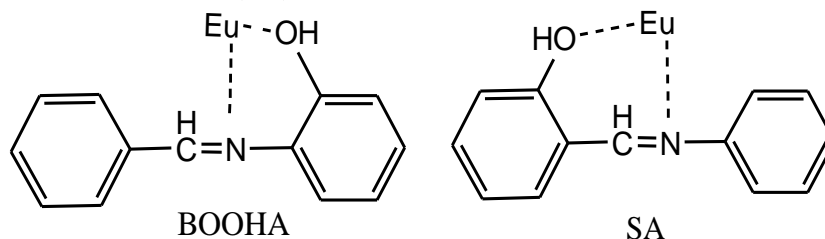
On the other hand the methyl group in compound S2A3MP in the ortho position to the nitrogen of the pyridine ring increases the electron density on this ring while in compound S2A4MP the reverse occurs, thus the possibility of interaction between the Schiff base and Eu(fod)<sub>3</sub> will be lowered.

The difference in values of K between S2A3MP and S2A4MP could also be attributed to the steric effect which resulted from the presence of the methyl group in a position which is close to the coordination center compared to the second Schiff base S2A4AP causing weakening of the interaction with Eu(fod)<sub>3</sub> which result in lowering of K values.

Also we can explain the steric effect if we accept the idea that, the interaction of large molecule like Eu(fod)<sub>3</sub> with the Schiff base allow to form eight membered ring rather than the six member ring i.e. the interaction take place with the pyridine nitrogen rather than the imino nitrogen. The reasons which make the eight member ring preferred over the six member ring can be explained as follow: if we compare the K values of the complexes obtained from the reaction of Eu(fod)<sub>3</sub> with the bases S2AP (K=200) and SA (K=67):



The formation of six member rings in both complexes would never explains the great difference of the K values between them so there is a high probability of the formation of a stable eight member ring with the S2AP molecule that releasing some of the steric effect which may be resulted due to spatial congestion raised by a large molecule such as Eu(fod)<sub>3</sub>. In addition, if



we compare the stability of the two complexes resulted from the reaction of Eu(fod)<sub>3</sub> with the Schiff bases SA and BOOHA we can see that the stability of the SA complex (K=67) which form a six member ring is greater than that of BOOHA complex (K=7) which form five membered ring.

Further evidences supported these expectations are supplied by theoretical studies.

### Theoretical Study:

This study is carried out by applying the semi-empirical Austin method1 (AM1)(Dewar *et al.*, 1985) for the estimation of a number of electronic and structural parameters relating to the Schiff bases under consideration. The bases parameters were considered as the most effective and controlling the K values since the other part of the complex (Eu(fod)<sub>3</sub>) is kept constant.

The energies of the HOMO ( $E_{HOMO}$ ) and LUMO ( $E_{LUMO}$ ) orbitals, hardness ( $\eta$ ), electronic

chemical potential ( $\mu$ ) and global electrophilicity ( $\omega$ )( Dewar *et al.*, 1985; Vektariene *et al.*, 2009; Veith *et al.*, 1993 Szabo *et al.*, 1989) were calculated using equations (2, 3, and 4) respectively and tabulated in Table (4). In addition a number of bond lengths and bond angles belonging to the active part in the structures of the Schiff bases were determined for the same purpose.

**Table (4):** Values of the electronic and structural parameters of Schiff bases calculated by AM1 method.

Comp.	Solvent	HOMO	LUMO	$\Delta(L-H)$	$\eta$	$\mu$	W
S2AP	Methylene chloride	-10.043	-4.804	5.239	2.619	-7.423	10.518
	Chlorobenzene	-10.053	-4.799	5.254	2.627	-7.426	10.495
	CCl <sub>4</sub>	-10.997	-4.715	6.282	3.141	-7.856	9.824
	Cyclohexane	-10.167	-1.969	8.198	4.099	-6.068	4.491
S2A3MP	Methylene chloride	-9.995	-4.617	5.378	2.689	-7.306	9.925
	Chlorobenzene	-10.057	-2.472	7.585	3.792	-6.264	5.173
S2A4MP	Methylene chloride	-10.969	-2.350	8.619	4.309	-6.659	5.145
	Chlorobenzene	-9.001	-4.590	4.411	2.205	-6.795	10.469
	Cyclohexane	-9.984	-4.665	5.319	2.659	-7.324	10.086
SA	Methylene chloride	-10.125	-4.675	5.450	2.725	-7.400	10.047
	Chlorobenzene	-10.210	-4.518	5.692	2.846	-7.364	9.527
BOOHA	Chlorobenzene	-9.824	-4.064	5.760	2.880	-6.944	8.371

\*\* Units of energetic values are ev.

$$\eta = \frac{1}{2}(E_{LUMO} - E_{HOMO}) \dots \dots \dots (2)$$

$$\mu = \frac{1}{2}(E_{HOMO} + E_{LUMO}) \dots \dots \dots (3)$$

$$W = \frac{\mu^2}{2\eta} \dots \dots \dots (4)$$

In order to explain the variation noticed in Table (4) and find a connection with the values of  $K$ , a simple comparison can be made among the bases S2AP, S2A3MP, and S2A4MP which have similar structures (they differ only by substituting H atom by methyl group) in certain solvent (chlorobenzene). Table (4) shows that, the values of  $K$  are reversely proportional to the difference between  $E_{LUMO}$  and  $E_{HOMO}$  ( $\Delta(L-H)$ ) or with the values of ( $\eta$ ). These variations agree with the principle that says "the less stable molecule is the most active one".

Looking at the charge present on the nitrogen atom of the pyridine ring (Np), we find that, the existence of ortho methyl relative to this atom in the molecule S2A3MP makes it higher than the analogous atoms in the S2AP and S2A4MP molecules. In the same time, the presence of a methyl group in position meta to the imine nitrogen (Ne) of the S2A3MP does not affect the

charge on this atom as a result the charge on Ne become less with respect to the similar in the other molecules.

In contrast the existence of methyl group in position para to the Ne of S2A4MP increases the charge on this atom and does not affect the charge on the Np. Meanwhile, the lower value of ( $\omega$ ) in S2A3MP that makes it behaves as a nucleophile more than the other molecules, becomes greater electrons donating and more liable to form a complex. In fact, the results obtained are in converse with the expected results according to the above discussion. This could be attributed to the steric factor which dominate the interactions of a large molecule ( $Eu(fod)_3$ ) with such Schiff bases and favor the formation of eight member ring.

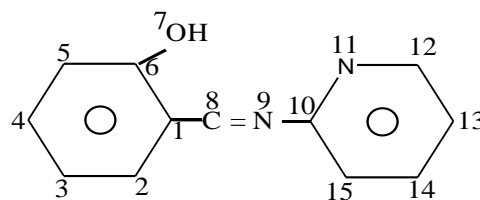
Such expectation is more clearly noticed when comparing these parameters of the molecules BOOHA, SA and S2AP:

**Table(5):** Comparison among the parameters of the molecules BOOHA, SA and S2AP

Base	$K(\text{mol}^{-1})$	$\Delta(L-H)$	Charge O	Charge Ne	$\eta$	$\mu$	W
BOOHA	7	5.760	-0.2672	-0.1555	2.880	-6.944	8.371
SA	100	5.692	-0.2515	-0.1514	2.846	-7.364	9.527
S2AP	200	5.254	-0.2491	-0.1356	2.627	-7.426	10.495

In this comparison; the principle that, the more stable molecule is less active toward the formation of complex is also being applied. Also we find that, the values of ( $\omega$ ) and the atomic charges (Ne and O) are totally opposing the values of  $K$ . This is support the previous assumption in which the electronic parameter is not the dominant factor and the steric effect is controlling the value of  $K$  and facilitate the formation of eight membered ring complex.

Additional support can come from the values of some structural parameters namely, bond length and bond angles listed in Table (6).



**Table (6):** Bond lengths ( $\text{\AA}$ ) and angles ( $^\circ$ ) of the active parts of the Schiff bases.

Base	$K(\text{mol}^{-1})$	$C_1 - C_8$	$C_8 - N_9$	$N_9 - C_{10}$
S2A3MP	50	1.4695	1.2878	1.4214
S2AP	200	1.4682	1.2917	1.4271
S2A4MP	250	1.4680	1.2918	1.4210
		$\angle C_6 C_1 C_8$	$\angle C_2 C_1 C_8$	$\angle N_9 C_{10} C_{15}$
S2A3MP		120.137	120.755	119.909
S2AP		121.807	120.302	124.284
S2A4MP		121.810	120.246	124.053
				$\angle N_9 C_{10} N_{11}$
S2A3MP				117.598
S2AP				114.719
S2A4MP				115.067

Looking carefully at the values in Table (5) we see that, the increase of  $K$  values is accompanied by the increase of ( $\angle C_6 C_1 C_8$ ) and decrease of ( $\angle C_2 C_1 C_8$ ) angle values. In the same time the values of the bond ( $C_1-C_8$ ) lengths are decreased and the values of ( $C_8-N_9$ ) is

increased. On the other side of molecule the values of ( $\angle N_9 C_{10} N_{11}$ ) is decreased and being inclined towards the angle ( $\angle C_6 C_1 C_8$ ) in the opposite direction which may refer to the position of connection with the reagent ( $Eu(fod)_3$ ) and forming the complex.

## References

- Al- Dabbagh M. G., (2005), "Spectroscopic study of charge transfer complexes of salicylidene and its substituents with Pr(fod)<sub>3</sub> in cyclohexane", M. Sc. Thesis, Mosul University.
- Ali R. T., (2006), "Spectroscopic study of charge transfer complexes of salicylidene aniline and its derivatives with lanthanide shift reagent Pr (fod)<sub>3</sub> in different solvents", M. Sc. Thesis, Mosul University.
- Asir A. M. and Badahdah K. O., (2007), "Synthesis of some new anils: part1. reaction of 2-hydroxy benzaldehyde and 2-hydroxy naphtha- aldehyde with 2-aminopyridine and 2-aminopyrazine", [www.mdpi.org/molecules](http://www.mdpi.org/molecules), 12, 1796-1804.
- Bensi H. A. and Hildebrand J. H., (1949), " A Spectrophotometric investigation of the interaction of iodine aromatic hydrocarbons", J. Am. Chem. Soc., 71, 2703.
- Binnemans K., Lodewyckx K., Parac- Vogt T. N., Deun R. V., Bart Goderis, Tinat B., Hecke K. V. and Meervelt L. V., (2003), "Adducts of Schiff bases with tris(β-diketonato) lanthanide (III) complexes: structure and liquid-crystalline behavior", Eur. J. Inorg. Chem., 3028- 3033.
- Dewar Michel M. J. S., Zebisch E. G., Healy E. F. and Stewart J. J. P., (1985), " Development and use of quantum mechanical molecular models. 76. AM1: A new general purpose quantum mechanical molecular models", J. Am. Chem. Soc., 107, 3902.
- Dubey R. K., Dubey U. K. and Mishra C. M., (2008), "Synthesis and physicochemical characterization of some Schiff-bases complexes of chromium (III)". Ind. J. Chem., 47A, 1208-1212.
- El-Bayomi M. A., El-Asser M. and Abdel-Halim, (1971), "Electronic spectra and structures of Schiff bases. I. benzanils", J. Am. Chem. Soc., 93, 586.
- Saleem L. M. and Al-dabbagh M. G., (2006), "Study of charge transfer complexes of salicylidene and its substituents with Pr(fod)<sub>3</sub> in cyclohexane by U. V. spectroscopy" Raf. Sci., 17, 49, 59-67.
- Sievers, Robert E., (1980) "Lanthanide chelate of a fluorinated ligand", file//I/4206132. htm., p1-4.
- Sulaiman S. T., Saleem L. M. and Authman A. S., (1998), "Thermodynamic study of the Interaction of cinnamylidene aniline derivatives with Eu(fod)<sub>3</sub> in acetonitrile and n-heptane solvent", Iraq J. Chem., 24, 49.
- Szabo A. and Nostlund, N. S. (1989), "Modern Quantum Chemistry", 1<sup>st</sup> Edn., Dover Publication, New York.
- Veith G. D. and Mekenyan O. G., (1993), "A QSAR approach for estimating the aquatic toxicity of soft electrophiles", Quant. Struct. Act. Relat, 12. 349-350.
- Vektariene A., Vektaris G. and Svoboda J., (2009), "A theoretical approach to the nucleophilic behavior of benzofused thieno [3, 2-b] furans using DFT and HF based reactivity descriptors", Arkivoc, 311-329.

دراسة طيفية ونظرية لثوابت استقرار معقدات انتقال الشحنة الناتجة من عدد من قواعد شيف مع كاشف الإزاحة  $\text{Eu}(\text{fod})_3$  في مذيبات مختلفة

الملخص

في هذا البحث تم حساب قيم ثوابت اتزان (K) معقدات انتقال الشحنة (CTC) الناتجة من تفاعل مركبات السلسلدين امينو بريدين مع كاشف الإزاحة اللثمانية  $\text{Eu}(\text{fod})_3$  في مذيبات مختلفة وباستخدام معادلة بنسي هيلدبراند. وقد تضمن البحث دراسة تأثير قطبية المذيب والعامل الإلكتروني وعامل الإعاق الفعالية.

كما اشتمل البحث على دراسة نظرية تم من خلالها حساب بعض المتغيرات التركيبية والطاقة مثل أطوال الأواصر وقيم الزوايا وطاقي الاوربتالين HOMO و LUMO فضلا عن بعض المتغيرات المحسوبة منهما مثل  $\eta$  و  $\mu$  و  $\omega$  وقد أنجزت هذه الدراسة باستخدام طريقتين من طرق حسابات ميكانيك الكم هما طريقة اوستن 1 (AM1) والتي مثلت احد طرق الحسابات شبه التجريبية وطريقة هارترتي فوك (HF). بمستوى اساس نظري (6.311G(d,p)) والتي مثلت احد طرق الحسابات الأساسية.